

SB_RHC

Dokumentation V2.2

Remits	1
--------	---

System requirements	2
---------------------	---

Installation	3
--------------	---

Features	4
----------	---

Foreign languages	5
-------------------	---

Order data and licenses	6
-------------------------	---

	7
--	---

Valérie Schmidt
Sophienstrasse 116a
Tel: 0721 9553874
Fax: 0721 9553875
<mailto:batch-tools@freenet>

1	REMITS	3
2	REQUIREMENTS	4
3	INSTALLATION	5
4	FEATURES	7
4.1	SOURCE DIRECTORIES	7
4.2	TARGET DIRECTORY.....	8
4.3	SORTING OPTIONS WITH SUB DIRECTORIES.....	8
4.4	DELETE FILES AFTER COPY	8
4.5	CHANGE SETTINGS.....	8
4.6	ACTIVATE.....	8
4.7	INSTALL LICENCE.....	9
4.8	SEND DATA TO SB_CUSTOMREPORT	10
5	LANGUAGES	11
6	ORDER DATA AND LICENSES	12

1 Remits

The batch system SIMATIC Batch (Siemens AG) stores the production data of all batches in xml files on the hard disk. All files are stored in a dedicated directory on the batch servers. This way of operation will cause some difficulties searching dedicated production data.

These problems can be solved using **SB_RHC.exe**. This program is a .Net application which is able to monitor the data files of SIMATIC Batch. New files will be copied to new, sorted directories. It is possible to delete the source files automatically. The new directories can be created from recipe name, recipe version and product name. These informations are taken from the source files. The source directory and the target directory for the files can be defined without any restrictions.

2 Requirements

The program SB_RHC has been developed under Microsoft .Net. Therefore the following requirements and restrictions have to be considered:

- The target computer needs to have an installation of the Microsoft .Net Framework version 1.1. The setup of SB_RHC contains a setup for this software, but will not be installed automatically.
- The use of .Net – applications is not allowed together with PCS 7 (Siemens AG). To avoid troubles with these systems, SB_RHC must be installed on different computers.
- Our software is protected by a softkey. A temporary use without a license is supported (Demo mode). Without any valid key the program will process up to 50 files. Beyond this limit no files will be copied any more. The program will be activated by installing a valid license only.

3 Installation

The complete installation is done by a setup program. Manual interactions are not necessary. Merely the selection of the target directory is possible:



Figure 3.1 Select the target directory

Pushing the „Ändern...“ – Button opens a file browser window and a new target directory can be selected or created.

After pushing the button „Weiter..“ the desired components can be selected:



Figure 3.2 Selection of the language

Information:

Only one language must be selected.

During the installation, the Setup will create a subdirectory „dotnet“ containing a Microsoft .Net Framework 1.1.

Information:

Uninstalling „SB_RHC“ will not delete this subdirectory. If the .Net Framework isn't necessary it can be deleted manually by the user.

4 Features

The installed program can be started via the task bar of Windows.

The user interfaces contains the following elements:

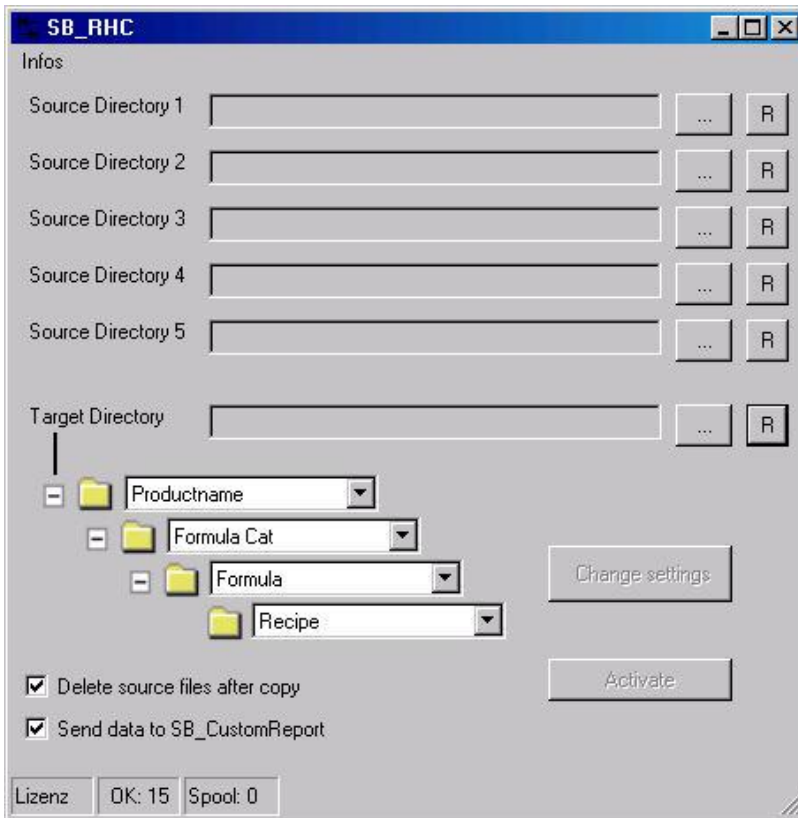


Figure 4.1 User interface SB_RHC

Details of the functions:

4.1 Source Directories

This is the directory containing the xml files which are generated by SIMATIC Batch. PCS 7 is publishing this share as „**Batch_Backup**“ in the network. Of course any other share in the network can be assigned as a Source Directory. After activation of the program the assigned directory will be monitored. New files will be copied to the Target directory considering other settings of the program.

Depending on the installed license key up to 5 Source Directories can be monitored. Thus a central storage for up to 5 discrete Batch Servers can be implemented.

Each Source Directory can be configured with the button



Depending on the installed license these buttons are enabled or disabled.
If you want to reset an assignment to a dedicated Source Directory, use the button



The assignment will be deleted and a new directory can be assigned.

Information:
Assigning the same directory to one or more Source Directories will disable the program!

4.2 Target Directory

This is the main directory to which the xml files are copied. Depending on other settings of the program various subdirectories will be created. Assigning and changing of this directory is done in the same way as for the Source Directories.

Information:
Assigning the same directory as Source and Target will disable the program!

4.3 Sorting options with sub directories

Beneath the source directory there is a set of combo boxes. For each combo box there are 4 sorting items available:

- Productname
- Formula Cat
- Formula
- Recipe

The combo boxes are arranged in the meaning of a hierarchy. For each item, which is selected in a combo box, the program will read out the appropriate information from the xml file and create a subdirectory with that name. The xml file will be copied into that subdirectory structure. An empty combo box will be ignored while generating the subdirectories.

4.4 Delete files after copy

Activating this option will delete the source files after being copied successfully. Thus the needed amount of disk space on the Batch Server will be reduced.

4.5 Change Settings

This button is accessible when the program is active monitoring Source Directories. Using this button will stop the activation and makes changes of the settings possible.

4.6 Activate

This buttons starts the monitoring of the Source Directories. Data, which are already available will be copied to the Target Directory if they are not present there. Then new incoming files will be copied to the Target Directory automatically.

4.7 Install Licence

If no valid license key is installed, this button will be visible. The program will work without a valid key in the Demo mode. Only 50 files will be processed. Beyond this limit the program will be disabled until a valid license is installed.

The license will be installed with a dedicated dialog.

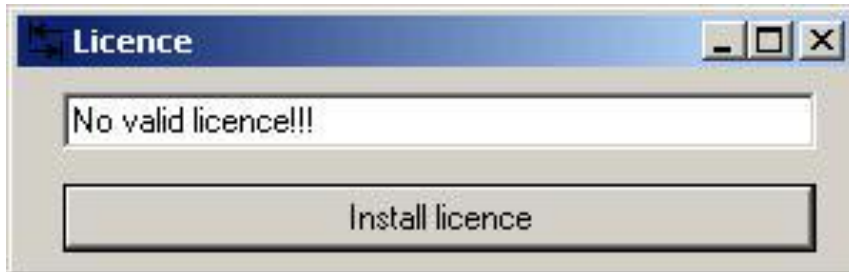


Figure 4.2 No valid license

If the license key is valid, the dialog will be closed automatically. Otherwise an error message will appear.

If all settings are done, the program can be minimized. It will disappear from the Windows Taskbar and move to the tray.

Information:

Due to safety reasons the program will be deactivated after each start and has to be activated manually. Therefore it can not be used with the Auto start of Windows.

4.8 Send data to SB_CustomReport

As an option the copied data can be send to SB_CustomReport.exe. They will be printed to the standard printer automatically. Of course an installation of SB_CustomReport.exe and a special license is required for this usefully option.

Information:

The program SB_CustomReport.exe has to be started once before this option will be available.

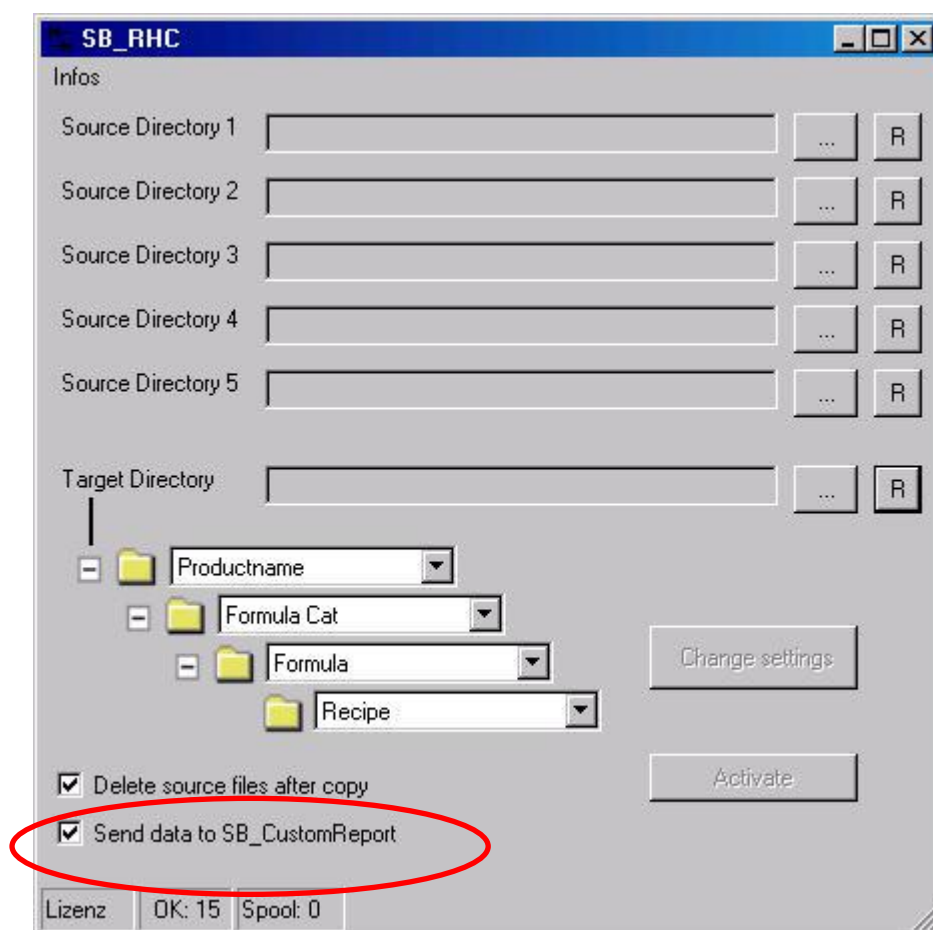
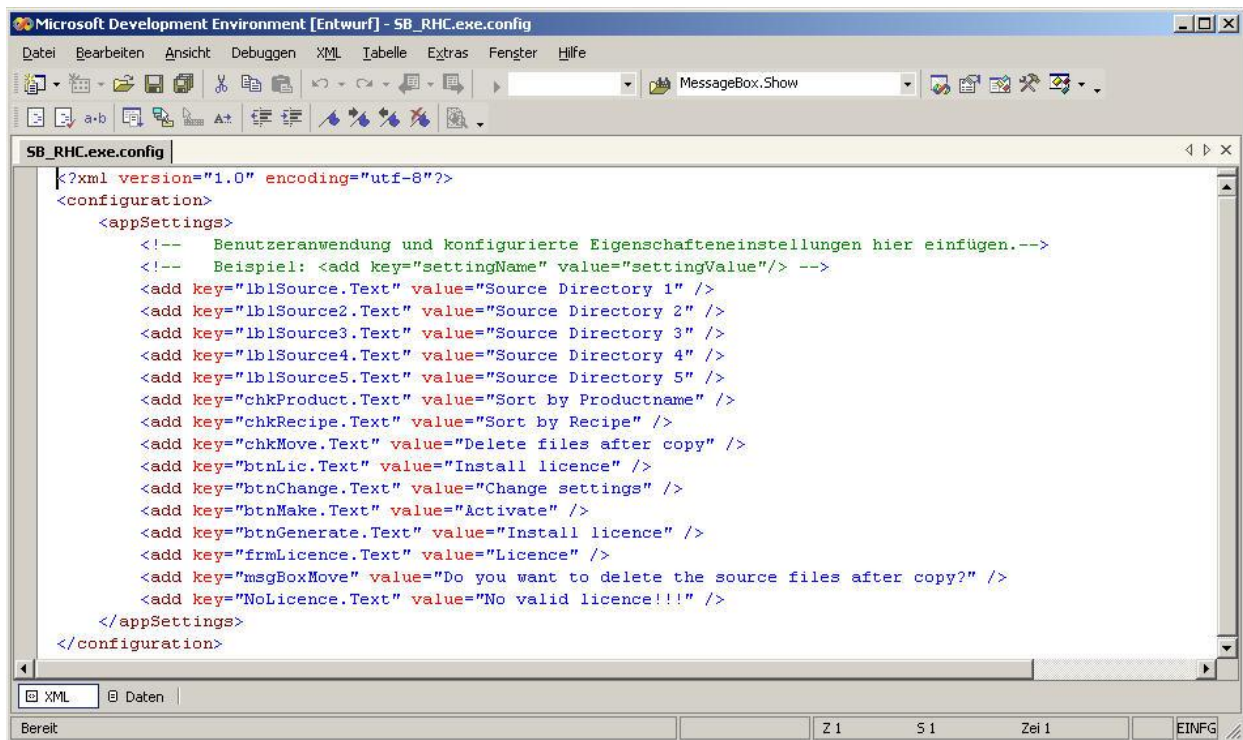


Figure 4.3: Automatic printing via SB_CustomReport

5 Languages

The program will be installed using one of the available languages. Language dependent texts are stored in the file **SB_RHC.exe.config**. If required, these definitions can be changed with an applicable editor.



```
<?xml version="1.0" encoding="utf-8"?>
<configuration>
  <appSettings>
    <!-- Benutzeranwendung und konfigurierte Eigenschafteneinstellungen hier einfügen.-->
    <!-- Beispiel: <add key="settingName" value="settingValue"/> -->
    <add key="lblSource.Text" value="Source Directory 1" />
    <add key="lblSource2.Text" value="Source Directory 2" />
    <add key="lblSource3.Text" value="Source Directory 3" />
    <add key="lblSource4.Text" value="Source Directory 4" />
    <add key="lblSource5.Text" value="Source Directory 5" />
    <add key="chkProduct.Text" value="Sort by Productname" />
    <add key="chkRecipe.Text" value="Sort by Recipe" />
    <add key="chkMove.Text" value="Delete files after copy" />
    <add key="btnLic.Text" value="Install licence" />
    <add key="btnChange.Text" value="Change settings" />
    <add key="btnMake.Text" value="Activate" />
    <add key="btnGenerate.Text" value="Install licence" />
    <add key="frmLicence.Text" value="Licence" />
    <add key="msgBoxMove" value="Do you want to delete the source files after copy?" />
    <add key="NoLicence.Text" value="No valid licence!!!" />
  </appSettings>
</configuration>
```

Figure 5.1 Configuration file for language dependent texts

Information:
Only the texts following „value=“ may be subject of change!

6 Order data and Licenses

The program can be ordered at:

Valérie Schmidt
Sophienstraße 116a
D-76135 Karlsruhe
Tel: +49 721 9553874
Fax: +49 721 9553875
Email: batch-tools@freenet.de

Download: www.michaelschmidt-web.de

If required an individual offer will be provided by us.

Every Copy of the program requires a separate license.

Different licenses for 1 – 5 source directories are available.

To generate a valid license the computer name of the target computer is required. For each computer a unique key will be provided. Changing the computer name will cause the loss of the installed licenses. New key will have to be installed.

The licenses will be send via email.